

Workforce for London  
World Class People  
World Class Healthcare

# Healthcare Education in London: The Future

**3<sup>rd</sup> Annual Simulation Conference**

**Innovation in Education – the engine for change**

**NHS**  
*London*

## Education as a key driver for service improvement

- Education not an end in itself – ‘The engine for change’
- Maximising the impact of education is intrinsically linked to integrated workforce planning
  - Healthcare for London
  - Workforce for London
  - Integrated Strategic Plans
- Engagement in planning at local, sector, London and national levels
  - Planning as a collaborative exercise between commissioner and provider

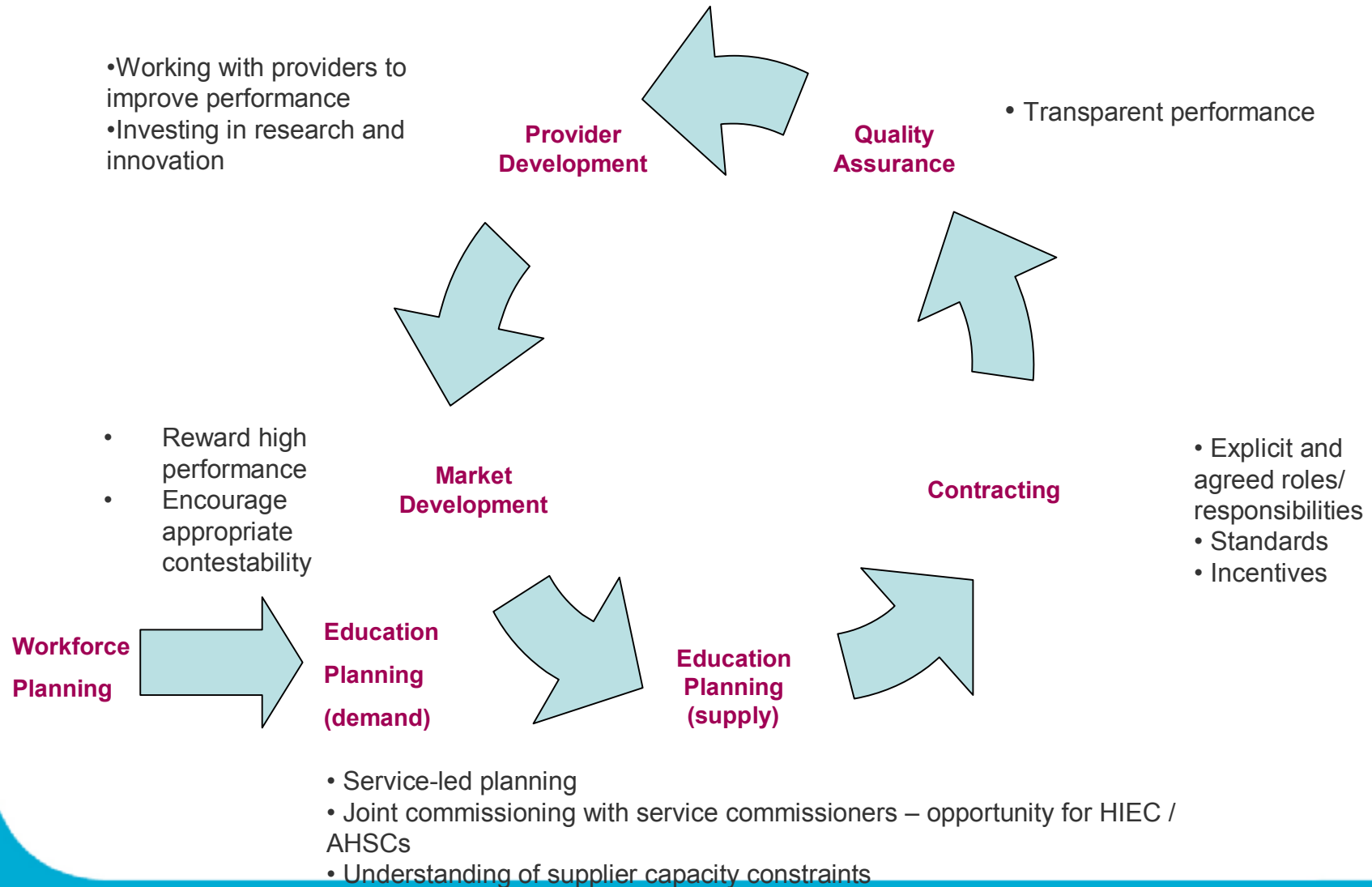
## Workforce and education need – the economic context

- Significant challenges from public finances
- The 'business case' for education investment
  - Quality as productivity
  - Enabling Systemic and Process productivity
- Aligning skills to service models through education
- Focus on quality
  - Transparency
  - Input / process measures
  - Output and outcome measures
- Focus on value – innovation in the education process

## Education Commissioning – A sustainable system for quality

- Significant systemic barriers to educators and commissioners
  - Incentives / resources
  - Corporate planning processes
  - Delivery of education in new settings / models
  - Lack of research / Dissemination of best practice
  
- Workforce for London – *‘A new education commissioning process which is clearly focussed on delivering high quality education, and through this, real improvement to patient service’*

# Workforce Planning & Education Commissioning Cycle



## Healthcare Education in London: The Future

- An unprecedented challenge
- A genuine opportunity
- Simulation – patient safe, effective, efficient, innovative.
- Clinical and educationalist leadership – the key enabler